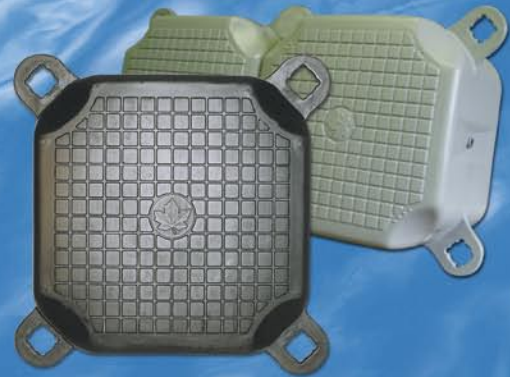


# Jetfloat™

Since 1976



The First Name in Floating Docks  
1-877-TO-FLOAT [www.jetfloat.com](http://www.jetfloat.com)



## About Jetfloat

This is the company that created the name and the reputation for the best modular docking system on the market today.

Derived from the term Floating Jetty, Jetfloats have been produced and sold around the world by a small group of dedicated individuals since 1976.

The policy at Jetfloat has been a simple one: Produce the Highest Quality product using the High Density Polyethylene Marlex 50100 resin, and sell it at the best possible price. A simple policy for a simple product. The Jetfloat system has been used in many different applications and has surpassed all expectations for durability and longevity.

Best described as large building blocks, Jetfloats can be put together in any shape or size by almost anyone. No special skills or expertise is required. Because of this, the end user can save on assembly and installation costs that are common in the docking market. We will supply the building blocks for your imagination.

At Jetfloat the quality of product, competitive pricing and customer satisfaction have always set us apart from the competition. If you have seen copies of our products, keep in mind that they are just that. Material selection and production processes are not always copied.

Jetfloats last... it's been proven since 1976

## Contact Jetfloat

E-mail: [info@jetfloat.com](mailto:info@jetfloat.com)

Toll Free: 1-877-TO-FLOAT (1-877-863-5628) - International # 902-875-2134

Fax: (519) 827-9490

Mailing Address: Jetfloat, Box 903, Guelph, Ontario, Canada, N1H 6M6

## About Jetfloat

For almost 30 years Jetfloats have been tried and tested from Alaska to Kuwait. Time has proven their quality for use at cottages, marinas, aquaculture, float-plane-facilities, rowing, barging, work-platforms, jet-ports, dry-docking, heli-pads and bridges.

Jetfloat's head office is located in Ontario, Canada. We have distributors throughout Canada and the U.S., as well as internationally. To contact a dealer near you please visit our dealer listings or contact us directly at our head office.

## The Standard Jetfloat

Jetfloats are single modular units made of high density polyethylene. The units can be interlocked to form any floating structure that is desired. Jetfloats are durable, maintenance free, convenient, safe and environmentally friendly.

## Durable

- Will not rot, splinter or corrode
- Blow molded, seamless construction
- High impact and puncture resistant
- High load capacity - 220 lbs (100 kg) per unit
- Weather, chemical, fire and UV resistant

## Convenient

- Easy to assemble
- Lightweight and portable
- Add-on capability
- No additional surface required

## Environmentally Friendly

- Non-polluting and recyclable
- No leaching or disintegration
- Maintains structural integrity

## Maintenance Free

- No upkeep required
- Jetfloats are made of the highest quality plastic available
- Ten-year warranty
- Life expectancy exceeds 30 years

## Safe

- Non-skid surface
- No sharp edges
- No hazardous hardware
- Stable

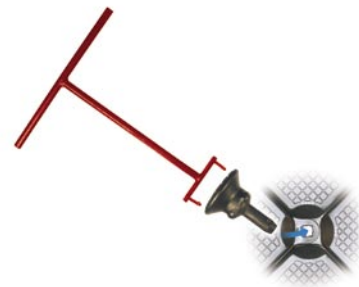
## Simple 3 Step Assembly



Jetfloats have four connecting lugs. Each lug is distinctly marked with one, two, three, or four dots, ensuring the right assembly sequence.




Single Jetfloats slide together to form one section of floating dock. Simply arrange the units so that the centre logo of each unit faces the same direction. This automatically places the dots in a counter-clock-wise sequence.



A connecting pin is inserted into the holes of the over-lapping lugs and locked into place. A 45° turn of the pin with the Jetfloat Assembly Key will lock or unlock the Jetfloats. (The dock can not be disassembled without the key.)

# Jetfloat Product Range

**Standard Jetfloat**



JF-LG (GREY)  
JF-LB (BLACK)


L x W x H:  
50 x 50 x 40 cm

Weight:  
6.2 kg, 14 lb

20" x 20" x 16"

Buoyancy:  
100 kg, 220 lb

**Standard Jetfloat Low Profile**




JF-SG (GREY)  
JF-SB (BLACK)

L x W x H:  
50 x 50 x 25 cm

Weight:  
4.8kg, 10.5 lb

Buoyancy:  
50 kg, 110 lb

**Double Jetfloat**



JF2-G (GREY)  
JF2-B (BLACK)

L x W x H:  
100 x 50 x 40 cm

Weight:  
11 kg, 24 lb

40" x 20" x 16"

Buoyancy:  
180 kg, 400 lb


**Available 2007**

**Connecting Pin**



CP-G (GREY)  
CP-B (BLACK)

**Connecting Pin Long**



CPL-G (GREY)  
CPL-B (BLACK)

Used for multi layer configurations

**Multi Post Pin**



CPM-G (GREY)

Accommodates  
32mm, 1 1/4" OD  
pipe or tube.

**Cleat Assembly**




CA (WHITE ONLY)

**Bumper Assembly**



BA (WHITE ONLY)

**Edge Fastener**




EF (WHITE ONLY)

**Single Spacer**



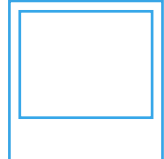
SS- G (GREY)  
SS-B (BLACK)

**Assembly Key**



K  
Painted Metal

**Nut Key**



Call for Details

NK

**Anchor Pin**  
Jetfloat Exclusive



CPA-GS (Grey Stainless Steel)  
CPA-BS (Black Stainless Steel)  
CPA-GG (Grey Galvanized)  
CPA-BG (Black Galvanized)

**Heavy Duty Pin**



CPH-GS (Grey Stainless Steel)  
CPH-BS (Black Stainless Steel)

3/4" Stainless  
mounting bolt included.

**Anchor Attachments**



AA3  
AA4

3" and 4" bushings  
recommended when  
using chain moorings


**Swim Ladder**



L (aluminum)  
L-SS (stainless steel)

3 rung folding ladders  
complete set.

**Motor Mount**



MM-S (stainless steel)



Jetfloat products may vary from that shown. Actual size and colour may vary. Some products may be limited. E.& O.E.